



DDB Nouveau Monde Le Tourisme P26325 - RCS C 443 247 168 - Photos: Laurent Baranger - Benoit Cabanes - Styliste: Laurent Vallée. Note: the vehicles photographed in this catalogue may include optional extras at extra cost. Since Pilote vehicles are sold in various countries throughout Europe, their features and equipment may differ from one country to another. For the exact definition of the models available in UK, please consult your Pilote dealer. In any event, Pilote reserves the right to alter the vehicles described in this catalogue at any time without notice. Every care has been taken with this catalogue but it is not contractually binding.

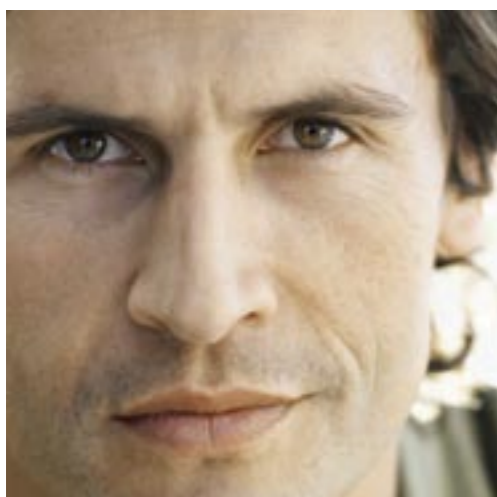
YOUR DEALER:

PILOTE

PILOTE
44310
LA LIMOUZINIÈRE
FRANCE

PRODUCT CATALOGUE
2007 RANGE

PILOTE 
HABITEZ LA PLANÈTE



**“THE BEST
DESIGN.”**

New front on all the Galaxy Explorateurs, References and Aventuras.
To delight the eye and even more, PILOTE has dedicated its **2007 collection**
to good design and ease of use.



“THE BEST SAFETY.”

ABS and driver's Airbag as standard on all models.
The very best that automobile technology can offer by the way of safety is now available on your PILOTE.





**“THE BEST
IN INNOVATION,”**

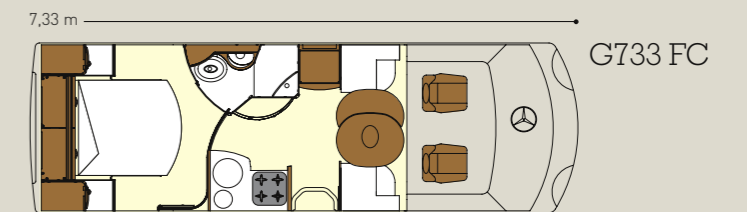
Double Floor System available on all the 2007 range.
 The DFS is a new concept of manufacture – a heated and insulated double floor which protects the motorhome from cold and prevents the water tanks from freezing.



DOUBLE FLOOR
DPS
 SERVICE

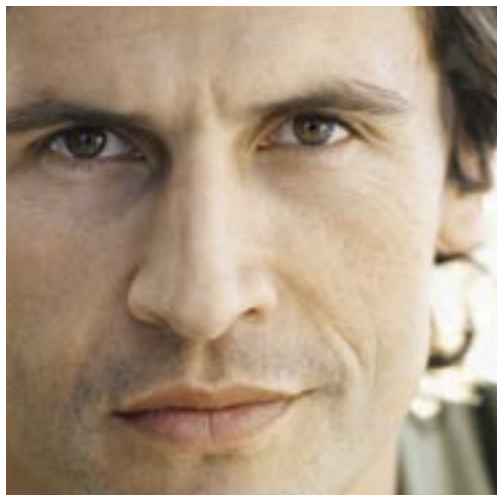


**“THE BEST
COMFORT.”**

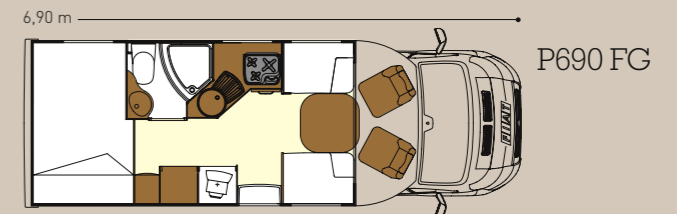


New layout with central bed on Reference and Explorateur.

For you to feel at home in your motor home, PILOTE takes care over sleeping arrangements and offers 2-metre long beds on all 2007 range.



“THE BEST LAYOUTS.”



Central bathroom integrated with the kitchen on all the versions of Garage.
 An exclusive new concept which offers the comfort of a bathroom with a large separate shower and a spacious kitchen with a proper worktop.



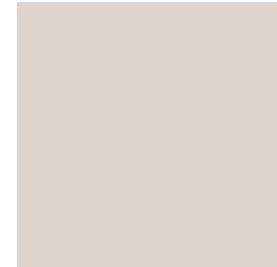
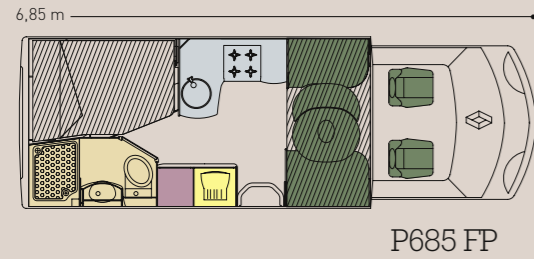
Explorateur

For those who want the best

When you want the best, why not have the best? With PILOTE, the best is called Explorateur. New, re-designed fronts, more comfortable interiors, better-performance engines, layouts that give you more space... it's as if the word "more" was invented with the new Explorateur range in mind.

Explorateur

Explorateur



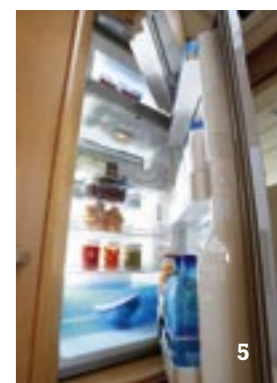
1 - If you like cooking, you appreciate space. And that's where the kitchen of the P685 FP leaves nothing to chance. Gas cooker with four burners, grill and oven, round stainless steel sink, extractor hood, wire pan drawer, AES 150-litre refrigerator... make your move.

2 - When comfort combines with safety and vice versa, it means you're on board a PILOTE. In the version "F" sitting room, the face to face settees will convert to face forwards and are fitted with 3-point safety belts.

3 - Table with telescopic leg on version F.

4 - G733FJ: Right or left, you take your pick. On all the models with bathroom at the rear and twin beds, the storage hold is accessible from both sides.

5 - There'll never be too much room for taste: big 150 l refrigerator on all the Explorateur range.



Explorateur



1



4



2



3

3 - Elegant, spacious, practical... there's no doubt, you are in the central bathroom of an Explorateur; this one is the G733 FC.

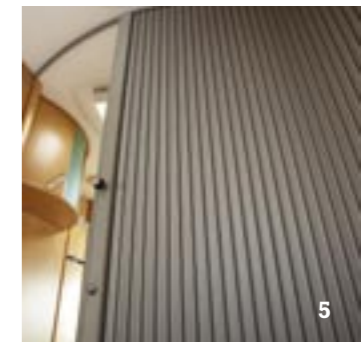
4 - Having guests is an art and in your Explorateur a pleasure: the table with the built-in extension in the front living room of the G733 FC.

5 - Sliding room divider in the G733 FC with central bed.

6 - No reason for a grain of sand to spoil your holidays! That's why the G733 FG has cycle garages with wide doors both sides, and an outdoor shower.

1 - G733 FG: Fold-down bed 140 cm wide, designer lighting and vast storage cupboards – that's where modernity meets practicality.

2 - G733 FG: a washroom with independent shower, a large permanent rear bed accessible up a few steps that hide a clever shoe rack... welcome home!



5



6

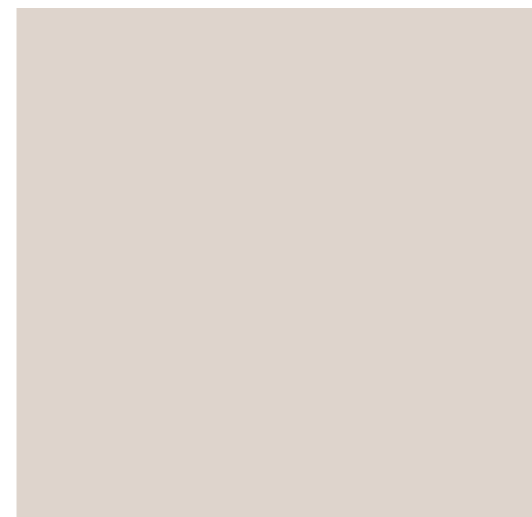
Explorateur

P715 FJ



2 - P715 FC/G733 FC: After a busy day, you deserve a few moments' rest. Comfortably seated, you sip your favourite drink at the bar and watch the television, concealed until now in its elegant sliding unit.

3 - The Explorateur models on a Renault, the P685 FP/FG and P715 FJ/FC adopt the new DFS (Double Floor System) concept of construction. In addition, these 4 models offer the option of a second crosswise bed in the front living area.



P715 FJ

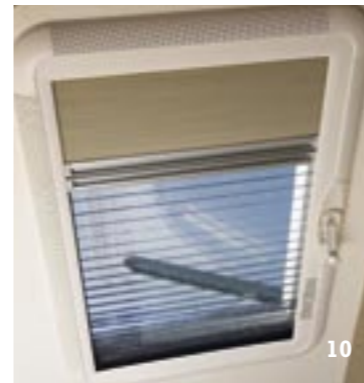

1 and 4 - Comfort is a luxury and your Explorateur has plenty of it. Just look at the rear bedroom with separate beds and the crosswise bathroom of the P715 FJ and G733 FJ.

Explorateur

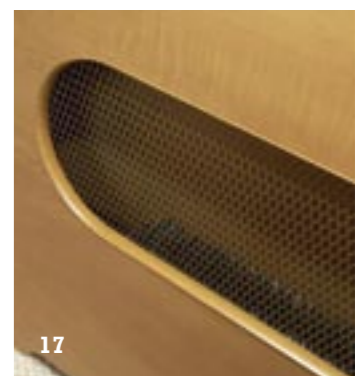
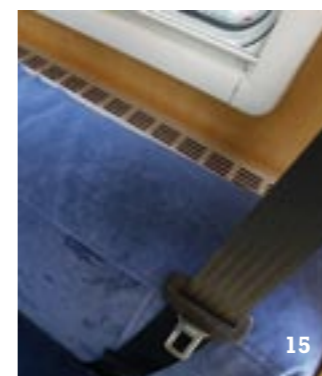
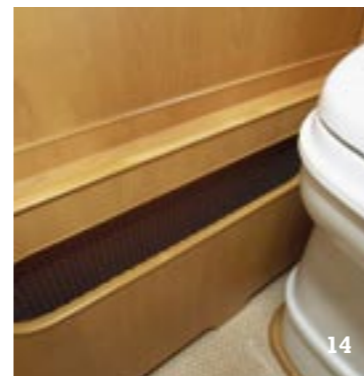
The Explorateur's strong points



- 1 - Explorateur bench seat decorated in CAPUCHINO fabric.
- 2 - Sliding storage + bottle rack (G733 FJ).
- 3 and 4 - Reversing sensor is standard on all the Explorateur range.
- 5 - Driver's door on Mercedes A-Class.
- 6 - Luxury Explorateur entrance door with central locking.
- 7 - Mercedes dashboard in burr walnut finish.
- 8 - Shower head in side hold (G733 FJ).
- 9 - Gas bottle locker (G733 FC).
- 10 - HEKI 3 opening skylight.
- 11 - New flush windows with built-in mosquito net.
- 12 - Sliding storage build into lower part of body, ski cupboard.

13 to 17 - Optional ALDE heating on Reference range G685 FP and G735 FJ and on all the Explorateur range.





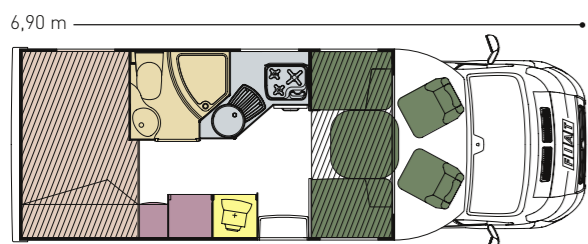
Reference

For those who insist on going ever further

Going further doesn't simply mean building up the miles. If you want to enjoy your motor home all year round, in all weathers, on any roads, at any latitude, then for another year running PILOTE has pushed back the limits of comfort, ergonomics and quality. The insulated double floor, the exclusive layouts, the new fronts on A-Class Peugeots and Renaults... more than ever, the Reference range has earned its name.

REFERENCE

REFERENCE



P690 FG



1

P690 FG



1 - Entertain your guests in the front living room of the G735 FJ. Once the front seats are turned round, the off-centre table leaves plenty of space for friends.

2 - Lovers of open spaces will be delighted by the front living room opening onto the L-shaped kitchen of the P690.

3 - The new FG layout : forget the corridor effect. Instead, a kitchen with a large worktop and a neatly-fitting bathroom, a refrigerator facing the kitchen and the TV in the centre... a new interior design from the PILOTE studios.

4 - P720 TJ: Comfort and space in this P720 TJ model with twin beds, very easy access, 80 cm wide. Under each bed, a large door opening onto a fitted cupboard.



4



2



3

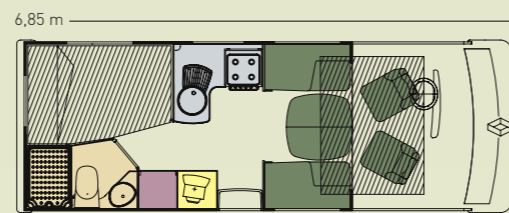
REFERENCE

1 - A-Class G685 FP CORAL colour-scheme.

2 - G685 FP: A large worktop, gas cooker with 4 burners, grill and oven, 150-litre refrigerator with curved door... dinner's ready!

3 - P690 FG: A large wardrobe with sliding drawers, a bedside unit... welcome to your suite.

4 - With the new garages, the word choice comes into its own in the P690 FG. You can access them from inside or out, from the right or the left and you choose their height 1.05 m or 1.20 m (optional extra). For increased comfort, the bedrooms are now insulated from the garage by a wooden floor beneath the slatted bed base.



P675 FPR

G685 FP



2



1



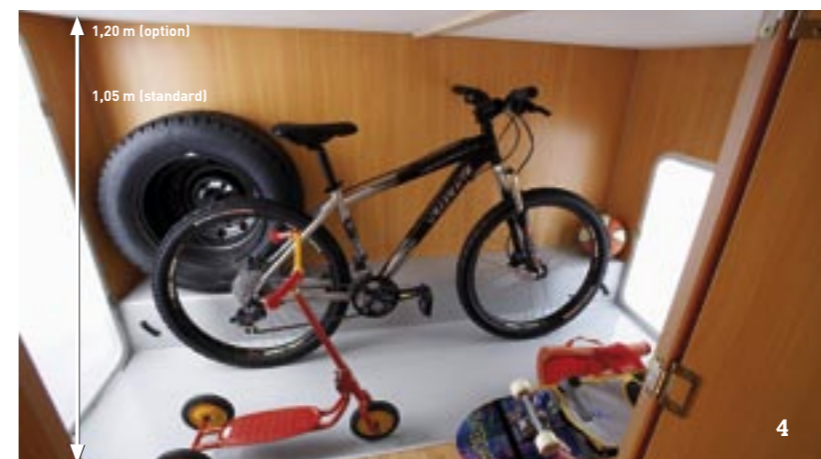
2



3



3



4





1

1 - G735 FJ: crosswise bathroom with separate shower cubicle and spacious toilet.

2 - In the bedroom of the G735 FJ, your nights are as enjoyable as your days and for good reason: bultex mattress, bed cover, cupboards, wardrobes... and direct access to the bathroom.

3 - Sliding wire baskets, cutlery drawers, spice pots ... in the L-shaped kitchen of the Reference P720 TJ, there's room for everything you need.

4 - Half-dinette, bench seat facing the road and directional front seats... in an instant, your P720 TJ turns into a comfortable lounge.



G685 FP



3



2



4



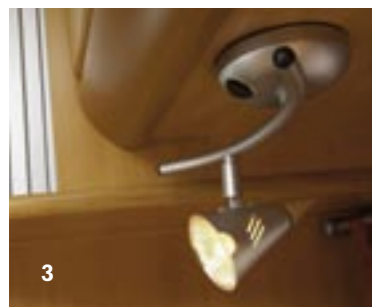
The Reference's strong points



1



2



3



3



4



5



6



7



8



9



10



11



12



13

14 - Gas bottle locker.
15 - Shoe storage under the DFS (Double Floor System) chassis.
16 - Access door to C6002 heating and airing cupboard.



14



15



16



Aventura

For those who live life to the full

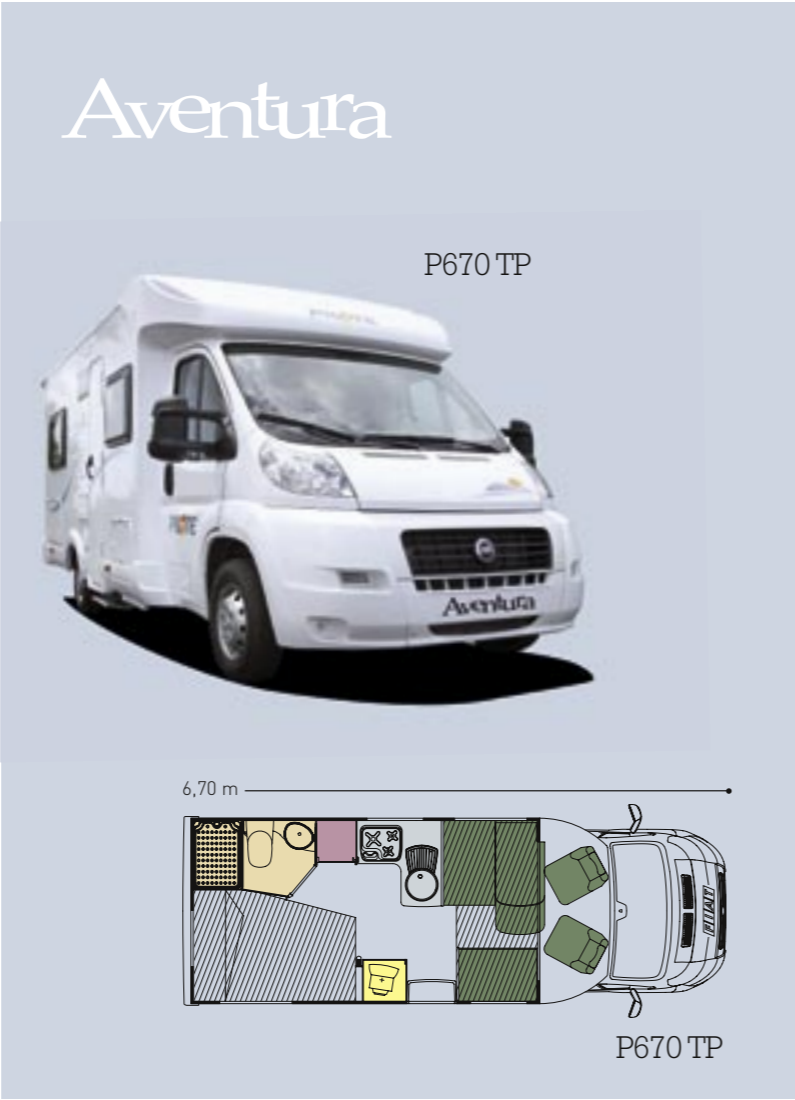
If your daily life is built around hiking, biking and boating, then Aventura is for you. The 2007 range has everything to delight lovers of wide open spaces, inside and out. Spacious rooms, generous storage, layouts that make the most of the good times... in family or among friends, just for a weekend or for longer, enjoy life in an Aventura.

Aventura

1 - Plentiful storage, an electric socket for mains appliances... in the L-shaped kitchen of the P670 TPA, cooking is a taste experience.

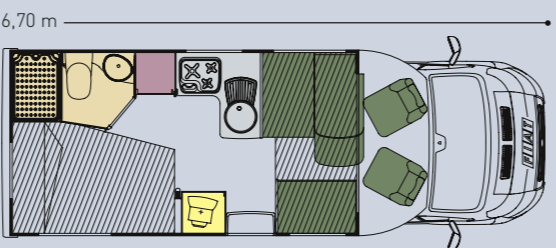


1



Aventura

P670 TP



P670 TP



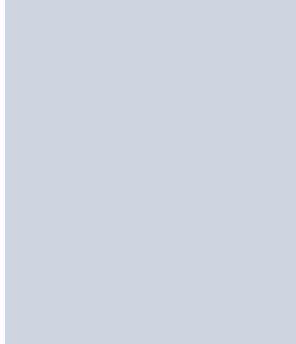
3



2

2 - A 2-metre long bed on a slatted base, bedside shelves, a curtain to separate the bedroom off from the rest of the motorhome... no you're not dreaming, this is the permanent bed in the P670 TP.

3 - Space is the keyword that governs the design of the new layout in the P690 version FG. When parked, the large front living room can seat six. On the road, it gives way to 2 front facing fitted with 3-point seat belts.



Aventura

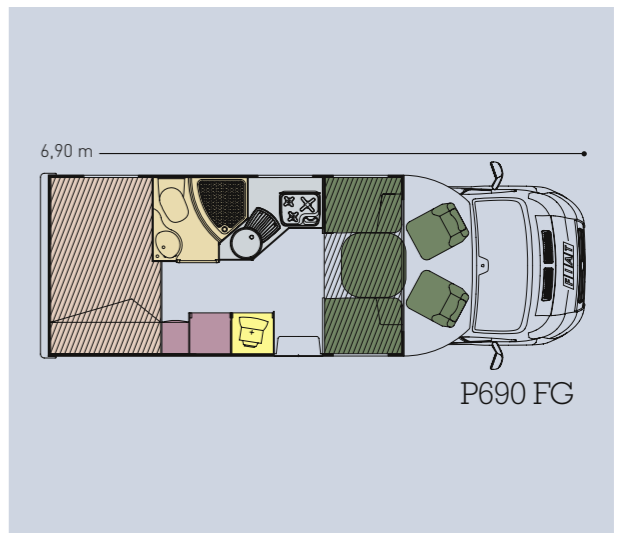


1 - In addition to the permanent rear bed (**2**), the TP versions offer a transverse bed 2.20 m wide – ideal when travelling with children or grandchildren.



3 - On the P690 FG, the bike store is accessible from inside or out. You even have a choice of height: 1.05 m or 1.20 m (optional extra).

4 - The Aventura bathrooms have had a beauty treatment: new shower fittings, new recessed ceiling lights, new accessories, and new storage.



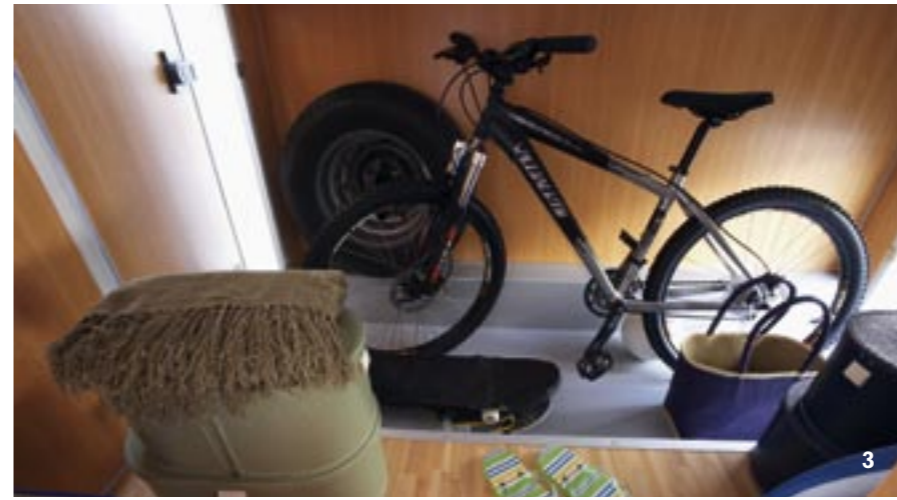
P690 FG

Aventura

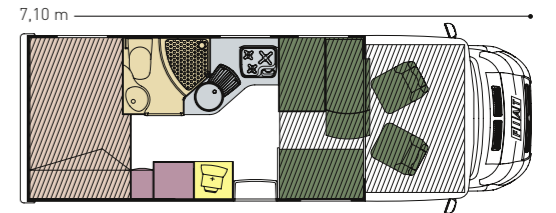
A710 TG



1



3



A710 TG

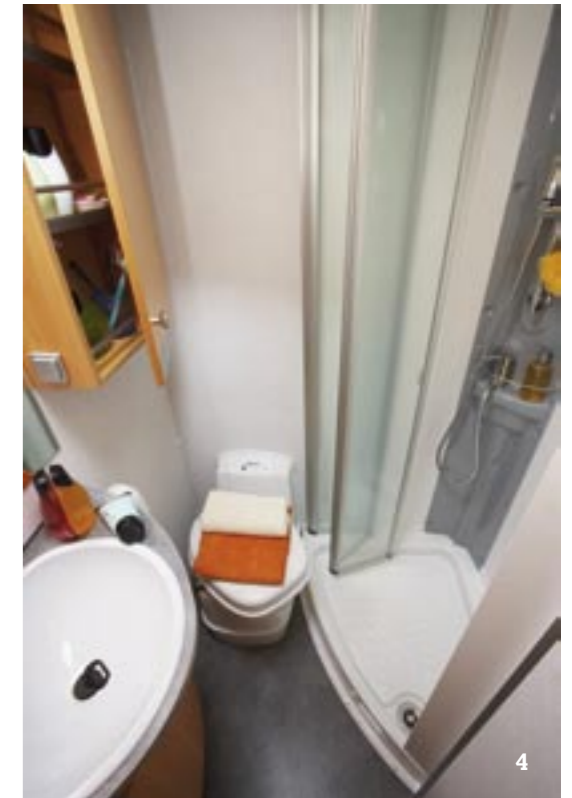
1 - Version FG: just like at home, the beds have handy bedside shelves to take your books, your glasses and more...

2 - A large dinette, a new kitchen layout and neatly fitting bathroom offering more space, your Coachbuilt A710 TG is made for having fun with the family.

3 - You don't need to choose what to take on holiday, the hold of the A710 TG comes in two heights: 1.05 or 1.20 m. And for easier access, you can get at it from inside or out.

4 - More space from the new L-shaped kitchen layout with neatly fitting bathroom, new shower fittings with soap dish... in the bathroom of the A710 TG, comfort and space go hand in hand.

5 - Slatted beds, individual adjustable lighting, side-opening window, skylight over the bed, storage alcove... in the Coachbuilt PILOTES, nothing is too big for the little ones.



4



2



5

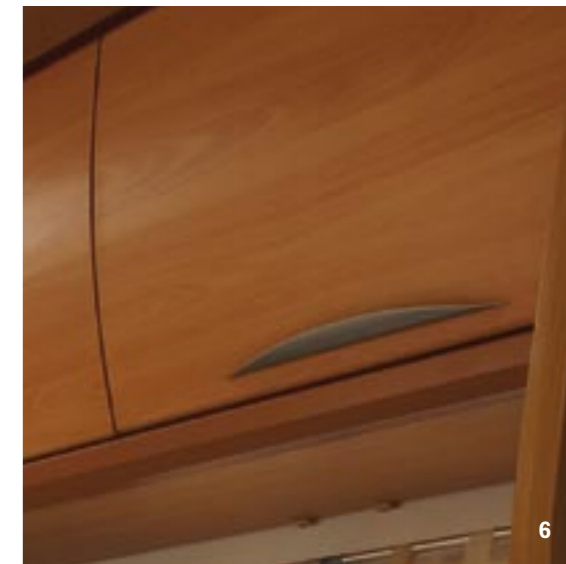


G690 TP

The Aventura's strong points



5



6

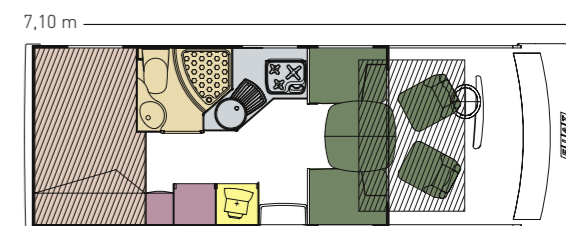


1



3

1 - Standard entrance door.
 2 - Sliding bottom drawer in kitchen.
 3 - New ceiling light in front living room.
 4 - New lighting over bench seats.
 5 - Table with built-in extension in the TP version.
 6 - New handles on top unit.
 7 - 5/6 dining places in the A710 TG living-room.
 8 - Panoramic Heki 2 opening skylight.



G710 FG



2



4



7



8

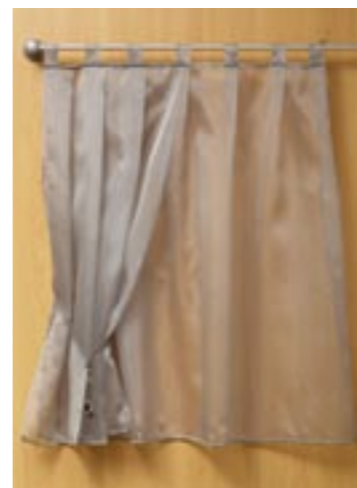
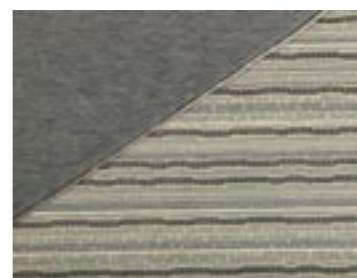
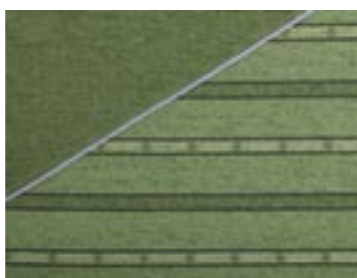
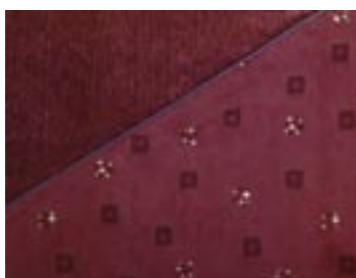
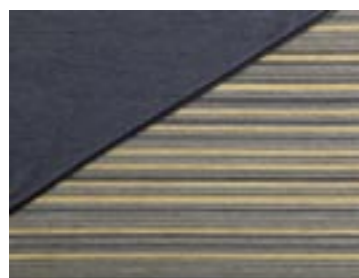
3 ranges 3 decors

PILOTE offers three different styles of cushions and curtains for you to feel at home in the Aventura, Reference and Explorateur ranges. The interior furnishings come in several colourways, giving full scope to comfort and wellbeing.



Fabrics & matching curtains in all 3 ranges

Aventura
REFERENCE
Explorateur



BELLE-ILE
Aventura scheme

CORAL
Aventura scheme

MANZANA
Explorateur scheme

CAPUCHINO
Explorateur scheme

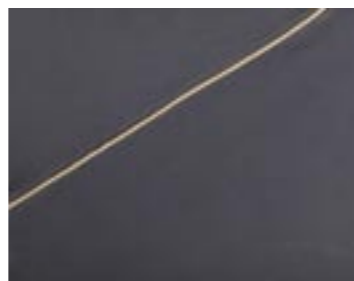
TERRACOTTA
Explorateur scheme

CONDOR
Reference scheme

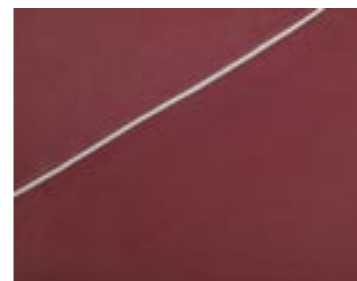
PIMM'S
Reference scheme

AQUAMARINE
Aventura scheme

Fabrics & matching curtains in all 2 ranges
REFERENCE
Explorateur



BLUE MUSIC
Reference scheme



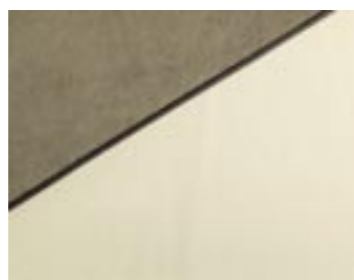
RED MUSIC
Reference scheme



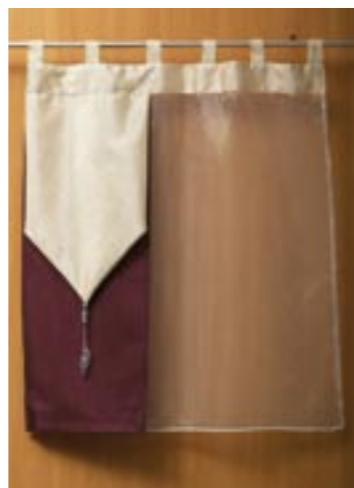
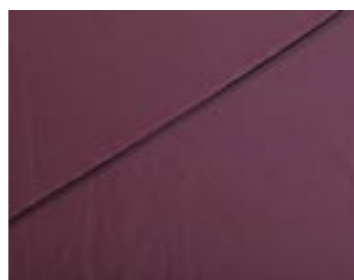
QUADRAT
Reference scheme



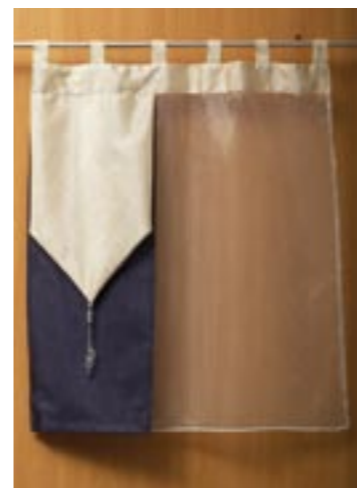
Fabrics & matching curtains range
Explorateur



BEIGE LEATHER
Explorateur scheme



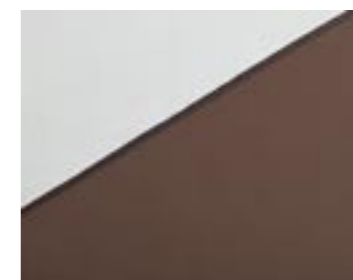
RED LEATHER
Explorateur scheme



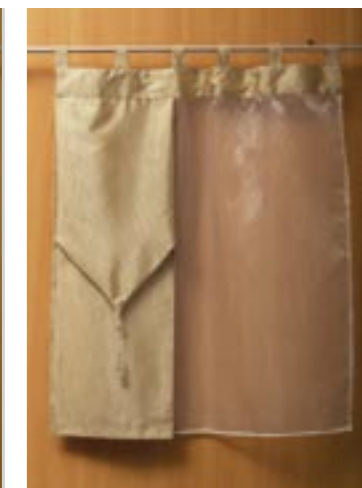
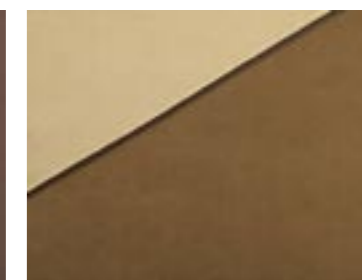
MARINE LEATHER
Explorateur scheme



SLATE LEATHER
Reference scheme



BROWN LEATHER
Explorateur scheme



Microfibre fabric ENOÄ
Explorateur scheme

PILOTE

Factory concept



- 1** - Manufacturing the sandwich panels (metal sheet/insulation/plywood).
- 2** - High-precision digital cutting of the insulation panels (lectra).
- 3** - Numerically-controlled contour milling of the sandwich panels (Digital control).
- 4** - Fixing the wooden structure onto the panel.



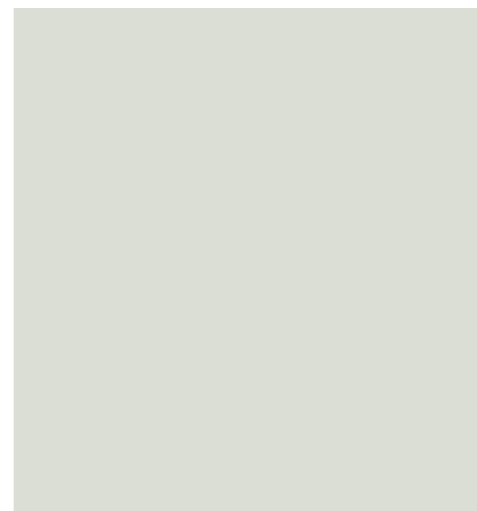
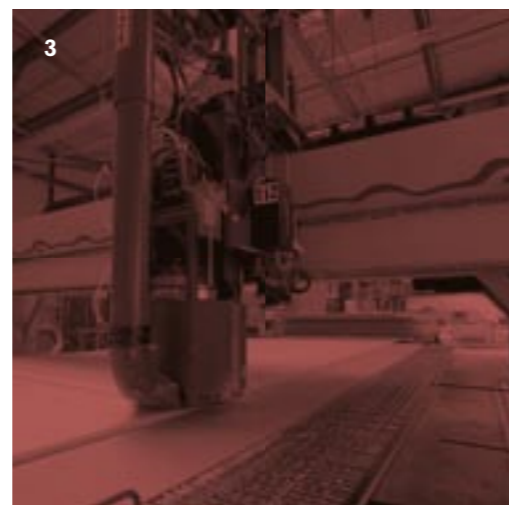
For almost 45 years PILOTE has been turning its skills to the service of the customer. Technology, quality, design, safety, innovation, comfort – these are the keywords of an industry devoted to recreational vehicles.

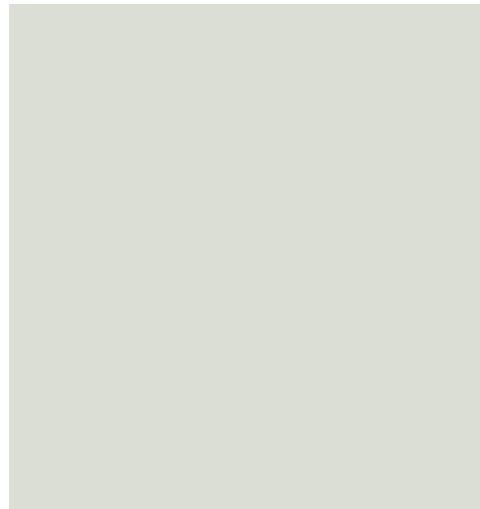
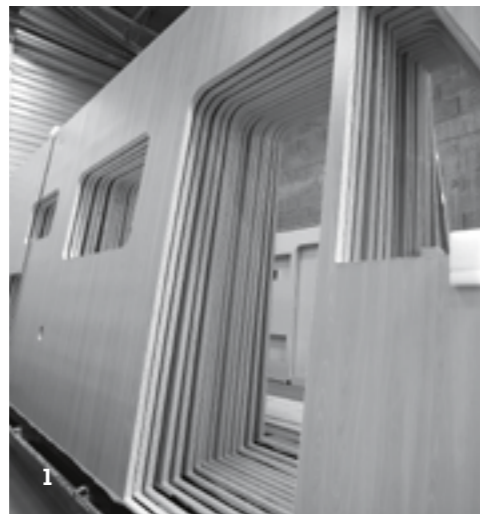


PILOTE has been ceaselessly developing new generations of motor homes, adopting new designs and new layouts. More than ever before, PILOTE 2007 is the top-of-the-range generalist eager to maintain its reputation for quality manufacture, quality equipment and value.



- 5** - Polyurethane bonding the panels.
- 6** - The glue is automatically and uniformly applied by spray nozzles.
- 7** - Optimised safe storage on racks for transport and assembly lines.
- 8** - Chassis storage.





1 and 2 - Preparing the panels before mounting on the vehicle.

3 - Front bodywork of A-Classes stored on racks for transport.

4 - Preparing, positioning and bonding the polyester monobloc over-cab compartment to the coachbuilt chassis.

5 - Structurally bonding the compartment to the monocomponent polymer.

New Fiat Chassis



New chassis with the same standard equipment on:

The Aventura range:

- Centralised locking with control panel
- Electrical exterior rear mirrors
- Electrical cab windows
- Double leaf rear suspension and anti-roll bar
- Tinted windows
- ABS
- Special low-slung motor home chassis
- Wide 1980 mm rear track
- Driver and passenger seats height-adjustable
- Driver and passenger seats with armrests
- Hubcaps

The Reference range:

- Centralised locking with control panel
- Electrical exterior rear mirrors
- Electrical cab windows
- Double leaf rear suspension and anti-roll bar
- Tinted windows
- ABS
- Special low-slung motor home chassis
- Wide 1980 mm rear track
- Driver and passenger seats height-adjustable
- Driver and passenger seats with armrests
- Hubcaps
- Air-conditioned cab
- Auto radio CD



FIAT Ducato X2/50 Multijet

Engine	Power	BASE	Max laden weight	Max torque da/ NM	Engine speed at max torque (tr/nm)	Number of gears	Tyres
2.2 L Multijet	100 hp	33 L	3T3	25	2000	5 + 1	XC Camping 215/70R15 (15 inches)
		35 L	3T5	25	2000	5 + 1	XC Camping 215/70R15 (15 inches)
2.3 L Multijet	130 hp	33 L	3T3	32	2000	6 + 1	XC Camping 215/70R15 (15 inches)
		35 L	3T5	32	2000	6 + 1	XC Camping 215/70R15 (15 inches)
		35 H	3T5	32	2000	6 + 1	XC Camping 225/75R16 (16 inches)
3.0 L Multijet	160 hp	35 L	3T5	40	1700	6 + 1	XC Camping 215/70R15 (15 inches)
		35 H	3T5	32	2000	6 + 1	XC Camping 225/75R16 (16 inches)
		40 H	4T0	32	2000	6 + 1	XC Camping 225/75R16 (16 inches)
		40 H	4T0	32	2000	6 + 1	XC Camping 225/75R16 (16 inches)



New Renault Chassis



New RENAULT phase III chassis with the same standard equipment on the

Reference and Explorateur ranges:

- ABS
- Driver's airbag
- Electric rear mirrors and windows
- Stowaway handbrake
- Air-conditioned cab
- Radio 4 x 15 W CD

Pacific Reference and Explorateur ranges:

- Passenger and driver seats

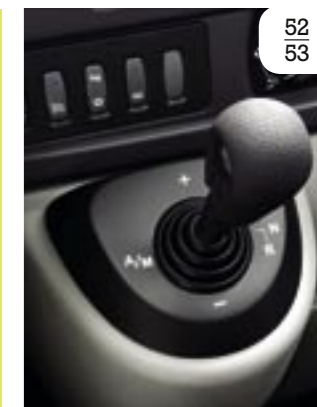
Explorateur range:

- Flexo base



RENAULT Master Dci 120 ch - 150 ch

Engine	Power	BASE	Max laden weight	Max torque da/ NM	Engine speed at max torque (tr/nm)	Number of gears	Pneumatiques
2.5 L	120 hp	RENAULT without ABS	3T5	30	1500	6 + 1	XC Camping Michelin 225/65R16 (16 Inches)
2.5 L	120 hp	RENAULT Automatic gearbox without ABS	3T8	30	1500	6 + 1	XC Camping Michelin 225/65R16 (16 Inches)
2.5 L	150 hp	RENAULT with ABS	3T5	32	1500	6 + 1	XC Camping Michelin 225/65R16 (16 Inches)
2.5 L	150 hp	RENAULT Automatic gearbox with ABS	3T8	32	1500	6 + 1	XC Camping Michelin 225/65R16 (16 Inches)



The regenerating Particle Filter (F.A.P.) is fitted to the exhaust system to trap and eliminate the particles of soot contained in the exhaust gases.

The QUICKSHIFT auto gearbox option is available on dci 120 and dci 150.

New Mercedes Chassis



Mercedes-Benz

New chassis with the standard equipment in:

The EXPLORATEUR Range:

- ABS / ASR / ESP
- Radio CD
- Controlled cab air-conditioning



MERCEDES Sprinter Cdi 315 - 318

Moteur	Power	BASE	Max laden weight	Max torque da/ NM	Engine speed at max torque (tr/nm)	Number of gears	Tyres
2,2 L	150 hp	Mercedes Sprinter 315 Cdi*	3T5	33	1200	6 + 1	235/65 R16 C
3,0 L	184 hp	Mercedes Sprinter 315 Cdi*	3T5	40	1600	6 + 1	235/65 R16 C
2,2 L	150 hp	Mercedes Sprinter 315 Cdi*	3T88	33	1200	6 + 1	235/65 R16 C
3,0 L	184 hp	Mercedes Sprinter 315 Cdi*	3T88	40	1600	6 + 1	235/65 R16 C

* Optional automatic gearbox available on 315 et 318 cdi.

Explorateur

REFERENCE

Aventura

